

OmniReach® FTTX Solutions

Optical Terminal Enclosure



ADC KRONE's OmniReach® FTTX Solutions are the industry's first infrastructure solutions designed from the ground up to meet the unique requirements of FTTX networks. Designed for operational efficiency and scalability, OmniReach solutions simplify FTTX network installation, maintenance and management from the central office/headend to the outside plant.

ADC KRONE's Optical Termination Enclosure (OTE) is a unique solution for splicing, termination, and pass-through cable requirements in fiber-to-the-premises (FTTP) architectures. Featuring preconnectorized adapter ports, the OTE expedites the fiber deployment process for new subscriber activation and service.

The OTE ensures seamless integration into existing infrastructure with limited or no conduit space. Sealed in a gasketed hardened plastic enclosure, the OTE provides reliable, uninterrupted performance in any outside plant environment.

Field-friendly with accessible design features, the OTE minimizes labor costs associated with service calls and speeds FTTP deployment in FTTP networks.

TECHNICAL DATA

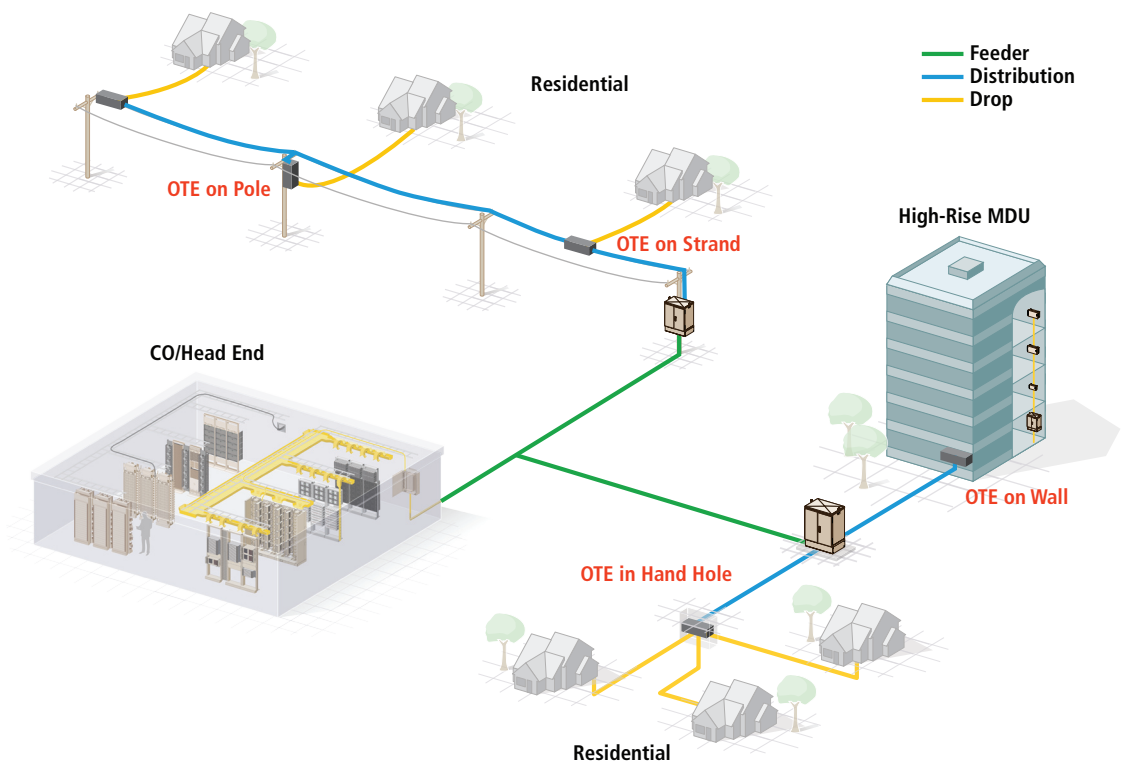


Technical Assistance
Europe & Middle East • +32 2 712 6542 • euro.tac@adckrone.com
www.adckrone.com

OmniReach® FTTX Solutions

Optical Terminal Enclosure

OmniReach® FTTX Solutions



Benefits:

- Cost-efficient system for deploying and managing fiber optic connections within a fiber to the premises (FTTP) network
- OTE integrates into existing building infrastructure with limited or no conduit space
- Hardened adapter ports provides plug-and-play connectorization—speeds subscriber service requirements
- Re-enterable, two-section unit swings open on hinge for quick access and easy service and maintenance
- Sealed, hardened plastic enclosure protects components from harmful UV rays, moisture, dust, chemicals and extreme temperatures
- Fiber paths designed to provide adequate bend radius protection—minimizing attenuation
- Environmentally safe, RoHS compliant

Features:

- Up to 16 available full-sized hardened adapter ports
- Two input ports available on each side of unit: accommodates two branch cables or pass through distribution cable
- Slack storage holds up to seven 1.5 m strands of pass through cable
- Accommodates 1x16, 1x4, or 1x8 splitters
- Holds up to five integrated splice sleeve holders and trays
- Accepts fusion splice or mechanical splices
- Accepts a variety of cable types: 7 mm-15.7 mm PKP, RealFlex™ 5 drop cable, flat drop or 16 KT cable with full-sized hardened connectors
- Compatible with OptiTap® connector system*
- Installs on wall, pole, wire strand or hand hole
- Compact design (H x W x D): 357 mm x 171 mm x 191 mm (14.06" x 6.7" x 8")

* OptiTap is a registered trademark of Corning Cable Systems Brands, Inc.

OmniReach® FTTX Solutions

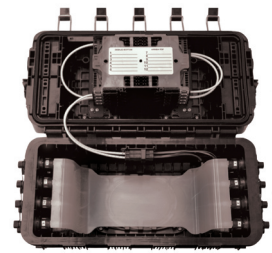
Optical Terminal Enclosure

Specifications

Optical Performance with APC/SC Connector
Attenuation: .35 dB max (to a reference connector)
 .40 dB max (attenuation, randomly mated)
Return Loss: 65 dB min

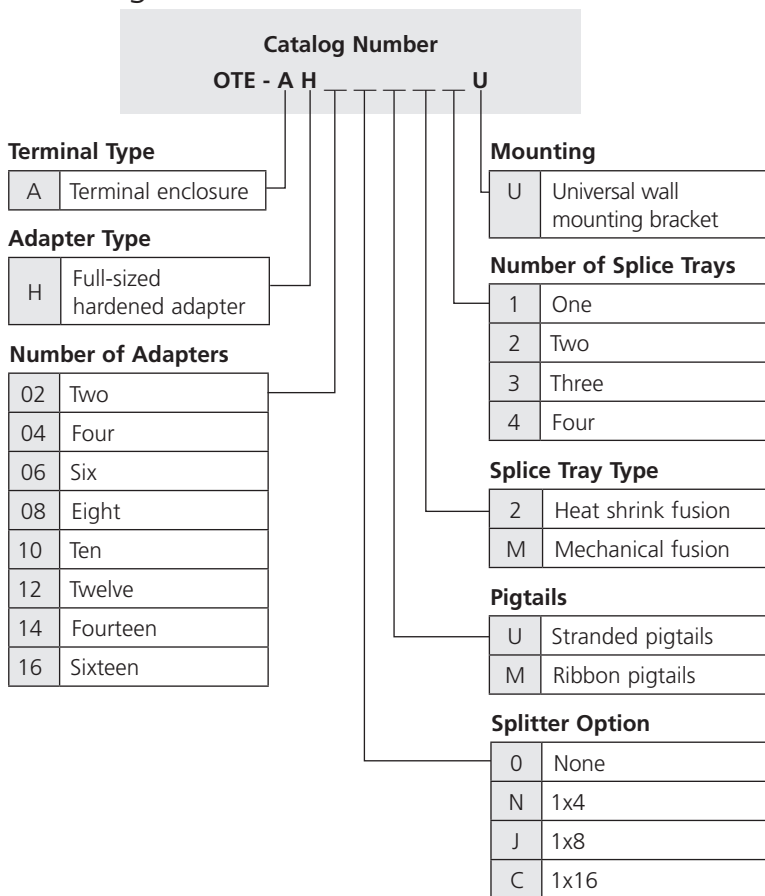
Optical Performance with Full-sized Hardened Connector

Splitter Configuration	1x4	1x8	1x16
Attenuation:	7.2 dB max	10.3 dB max	13.5 dB max
Return Loss:	55 dB min	55 dB min	55 dB min
Uniformity:	0.8 dB max	1.0 dB max	1.0 dB max
PDL:	0.2 dB max	0.2 dB max	0.3 dB max
Directivity:	60 dB min	60 dB min	60 dB min



04/10 • 107530BE OmniReach® FTTX Solutions

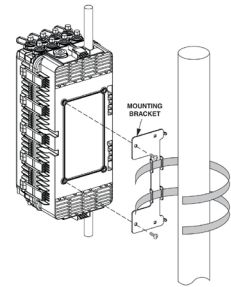
Ordering Information



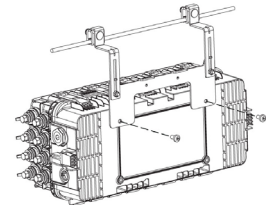
Accessories

Ordering Information

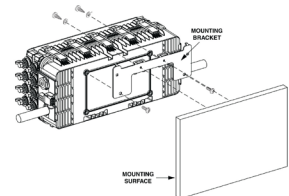
Description	Catalog Number
OTE Mounting Kits	
Pole and wall	OTE-ACC-WKIT
Aerial/strand	OTE-ACC-SKIT
Wall and strand	OTE-ACC-SW
Branch Kits	
Round multifiber cable; accommodates cable 9-16 mm thick	OTE-ACC-001
Flat fiber cable; 4.5 mm x 8.1 mm	OTE-ACC-003



Pole Mount



Strand Mount



Wall Mount

TECHNICAL DATA



Web Site: www.adckrone.com

EMEA Office: ADC GmbH, Beeskowdamm 3-11, 14167 Berlin, Germany • Phone: +49 30 8453-1818 Fax: +49 30 8453-1703. For a listing of all ADC KRONE's global sales office locations, please refer to our web site.

UK Office: ADC Communications (UK) Ltd., Runnings Road, Kingsditch Trading Estate, Cheltenham, Gloucestershire GL51 9NQ, United Kingdom • Phone: +44 (0) 1242 264 400 Fax: +44 (0) 1242 264 488 contactuk@adckrone.com

Specifications published here are current as of the date of publication of this document. Because we are continuously improving our products, ADC KRONE reserves the right to change specifications without prior notice. At any time, you may verify product specifications by contacting ADC GmbH headquarters in Berlin. ADC Telecommunications, Inc. views its patent portfolio as an important corporate asset and vigorously enforces its patents.

107530BE Apr10 Original © 2010 ADC Telecommunications Inc. All Rights Reserved